

Regional workshop on strengthening the collection and use of  
international migration data in the context of the 2030 Agenda for  
Sustainable Development  
from 31 January to 3 February 2017 in Bangkok, Thailand.

**K.W.S. Saddhananda**

**Deputy Director Statistics**

**Department of Labour, Sri Lanka**

**Member of the National Statistical Office (DCS)**

# 1. International migrants definitions

## 1.1 Administrative Definition

If a person moved out of the country for a moment or a person comes in to the country for a moment is concerned as international in migration or international out migration.

Exclude transit passengers.

(Department of Immigration and Emigration definition)

# 1. International migrants definitions

## 1.2 Census Definition

The household members who have gone abroad for a duration of more than 6 months other than for permanent residence is concerned as living abroad persons. Information on household members who have been abroad for 6 months or less should not be given here as they are already concerned as usual residents.

(Department of Census and Statistics in Sri Lanka)

## 2. Major sources of migration statistics

### 2.1 Arrivals and Departures through the Immigration counter

(Department of Immigration and Emigration in Sri Lanka)

### 2.2 Registration list of foreign employees.

(Sri Lanka Bureau of Foreign Employment )

The persons who are going abroad for employment with registration are included in the list.

### 2.3 Population and Housing Census report 2012

(Department of Census and Statistics in Sri Lanka)

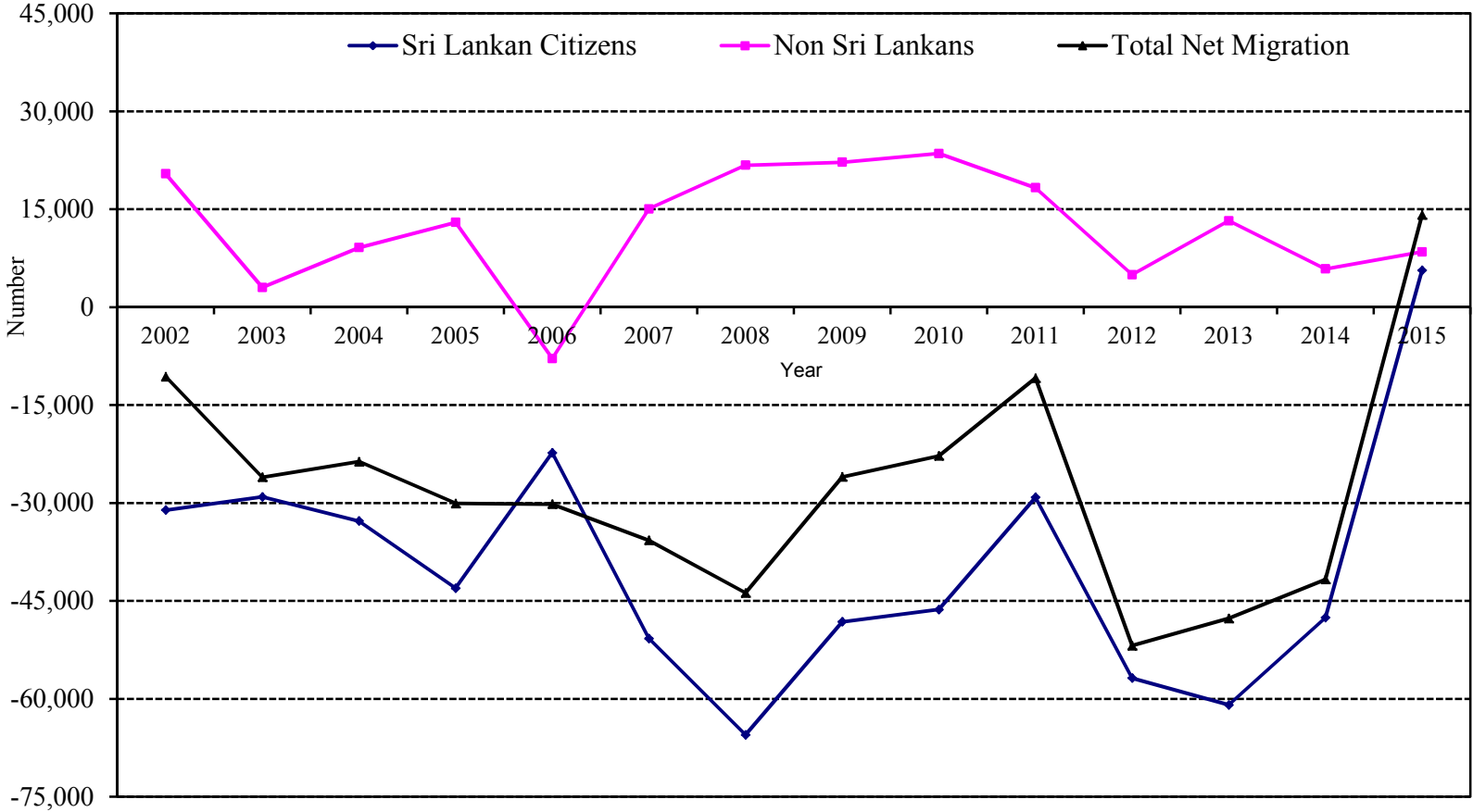
### 3. Coordination Mechanism to combine different sources of migration data

The office of the Foreign Employment Bureau has established at Immigration and Emigration counters to check the citizens who are going abroad for employments at the departure counter. But no arrangements for arrivals.

No formal coordination mechanism to combine sources of migration data

# Brief interpretation of migration data

**FIGURE 1.9: INTERNATIONAL NET MIGRATION PATTERN IN SRI LANKA  
2002 - 2015**



Source : Department of Immigration and Emigration Sri Lanka

## Brief interpretation of migration data

**Table 1.17B : INTERNATIONAL NET MIGRATION  
BY NATIONALITY, 2002 - 2015**

Year	Net Migration		
	Sri Lankan Citizens	Non Sri Lankans	Total
2002	-31,084	20,432	-10,652
2003	-29,067	3,020	-26,047
2004	-32,778	9,112	-23,666
2005	-43,058	12,975	-30,083
2006	-22,314	-7,867	-30,181
2007	-50,776	15,054	-35,722
2008	-65,522	21,748	-43,774
2009	-48,208	22,189	-26,019
2010	-46,314	23,527	-22,787
2011	-29,153	18,290	-10,863
2012	-56,828	4,974	-51,854
2013	-60,930	13,241	-47,689
2014	-47,579	5,860	-41,719
2015	5,657	8,464	14,121
Total	-557,954	171,019	-386,935

Source : Department of Immigration and Emigration Sri Lanka

## Brief interpretation of migration data

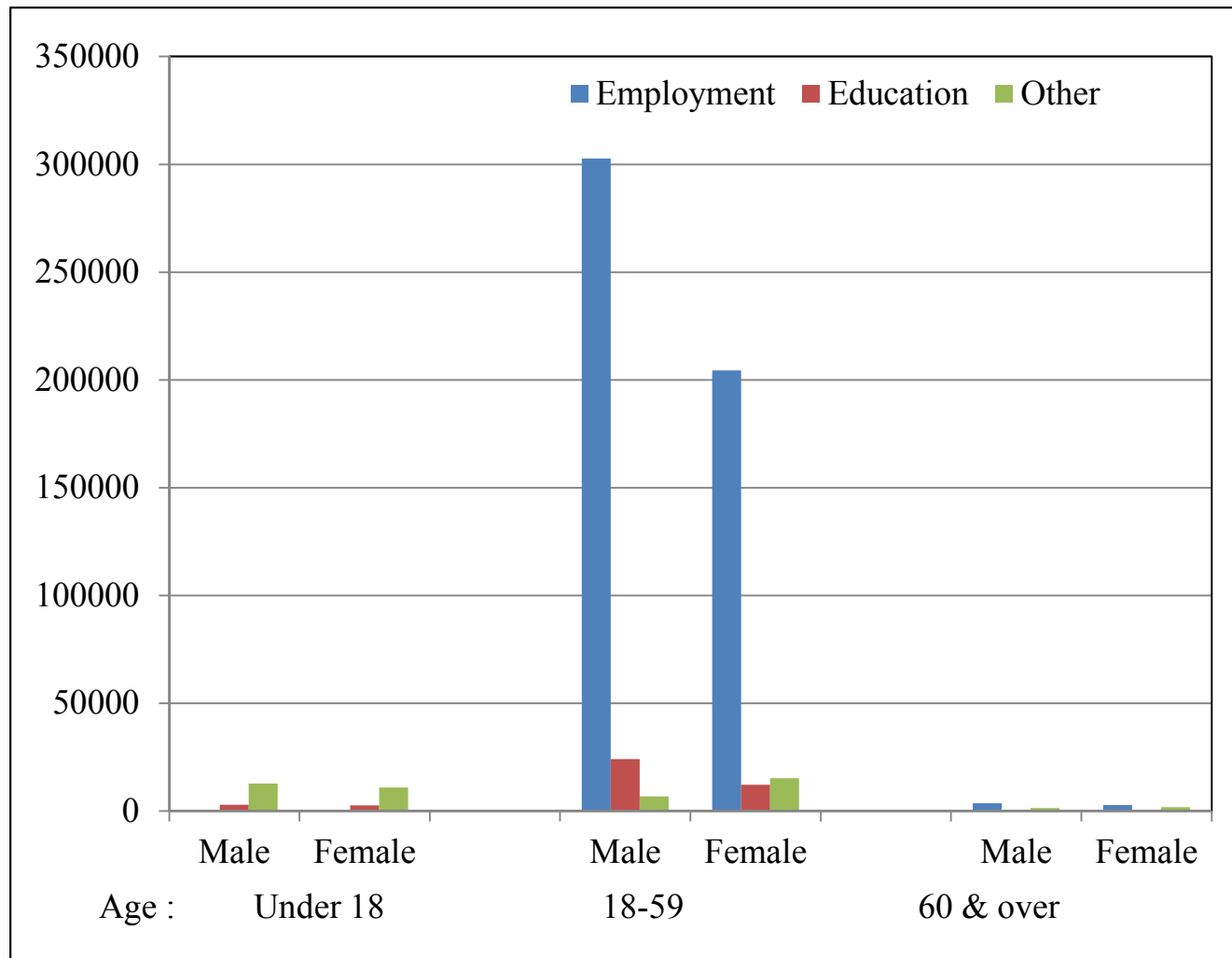


Figure : Population living abroad temporary by reason for going abroad, age and sex

Source : Census of Population and Housing Report 2012 (Table A48)



## Brief interpretation of migration data

Table A48 : Population living abroad temporary by reason for going abroad, age and sex

	All Ages			Under 18			18 - 59			60 & over		
	Total	Male	Female	Total	Male	Female	Total	Male	Female	Total	Male	Female
<b>Total Abroad Population</b>	<b>604,540</b>	<b>354,462</b>	<b>250,078</b>	<b>29,218</b>	<b>15,653</b>	<b>13,565</b>	<b>565,460</b>	<b>333,582</b>	<b>231,878</b>	<b>9,862</b>	<b>5,227</b>	<b>4,635</b>
Employment	513,527	306,368	207,159	-	-	-	507,066	302,696	204,370	6,461	3,672	2,789
Education	42,095	27,101	14,994	5,562	2,905	2,657	36,373	24,089	12,284	160	107	53
Other	48,918	20,993	27,925	23,656	12,748	10,908	22,021	6,797	15,224	3,241	1,448	1,793

Source : Census of Population and Housing Report 2012

# Brief interpretation of migration data



Figure : Age Pyramid for the Foreign Born Population - 2012

Source : Census of Population and Housing Report 2012 (Table A18)

## Brief interpretation of migration data

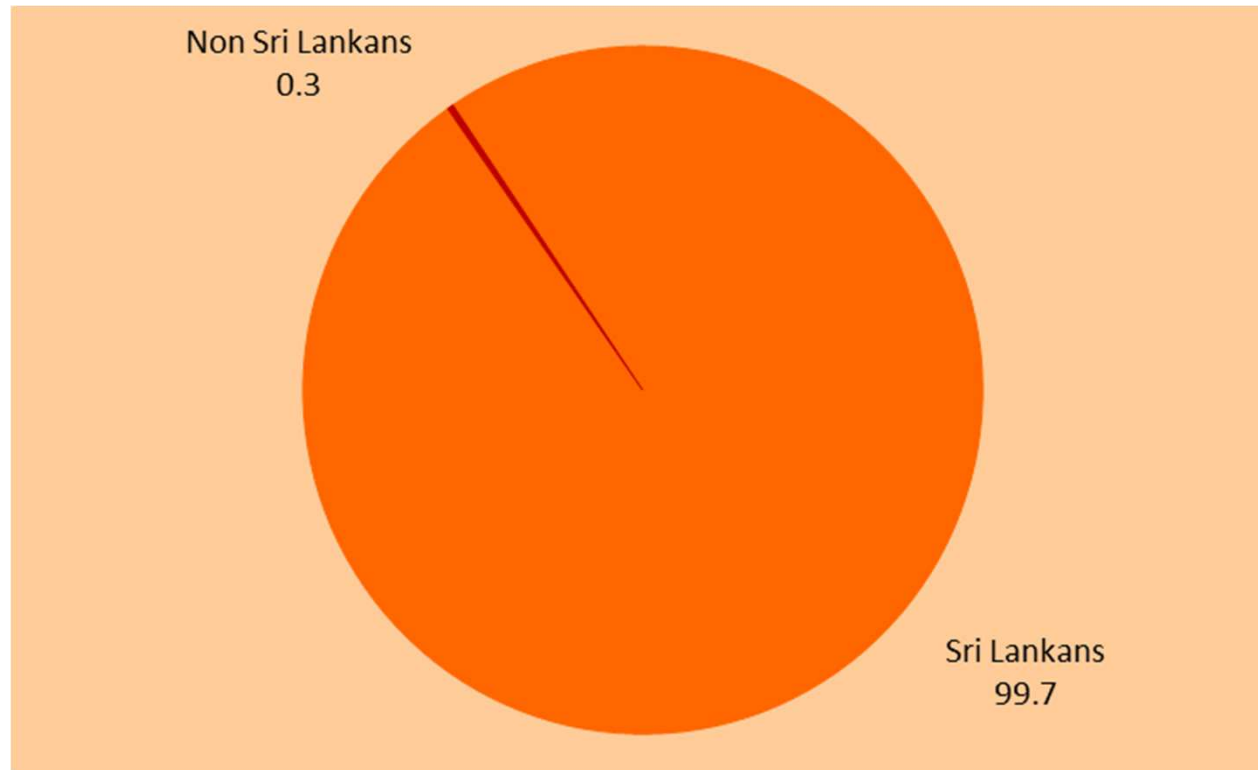


Figure : Percentage distribution for nationality of employees

The above pie chart shows the nationality of employees as Sri Lankan workers and Non Sri Lankan workers in Organized private sector.

Source : Annual Employment Survey 2016  
Department of Labour in Sri Lanka

## Brief interpretation of migration data

### Approximate Crude Estimation

Estimated number of Employees in organized private sector in Sri Lanka 2016 is

26,49028

Estimated number of Establishment in organized private sector in Sri Lanka 2016 is

70158

Estimated number of foreign citizens who engaged in employments in 2016 is

$$2649028 * 0.003 = 7947$$

≈ Labour in migrants in Sri Lanka

## Brief interpretation of migration data

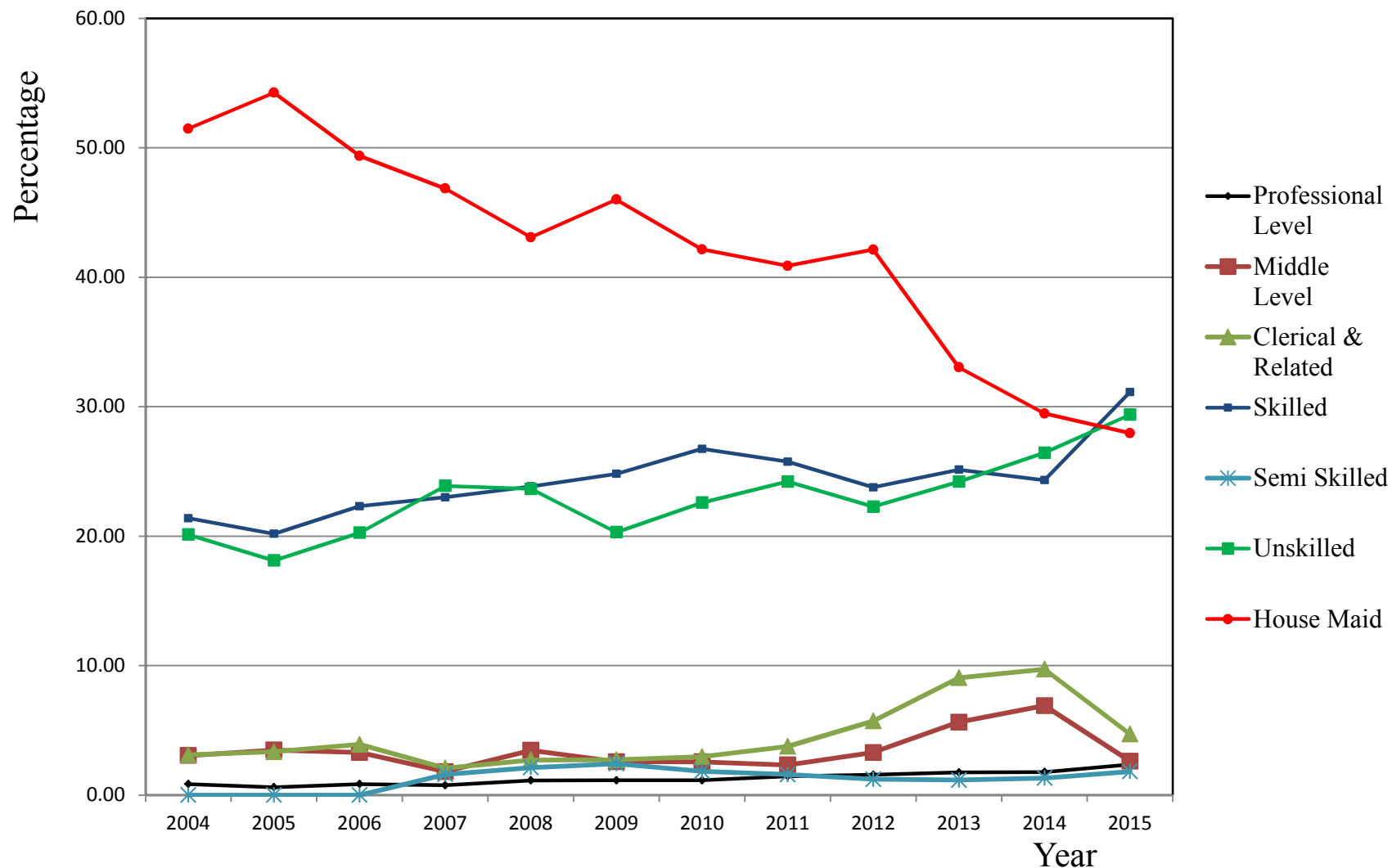


Figure : DEPARTURES FOR FOREIGN EMPLOYMENT BY MAJOR OCCUPATIONAL LEVELS, 2004 - 2015

Source : Sri Lanka Bureau of Foreign Employment

?